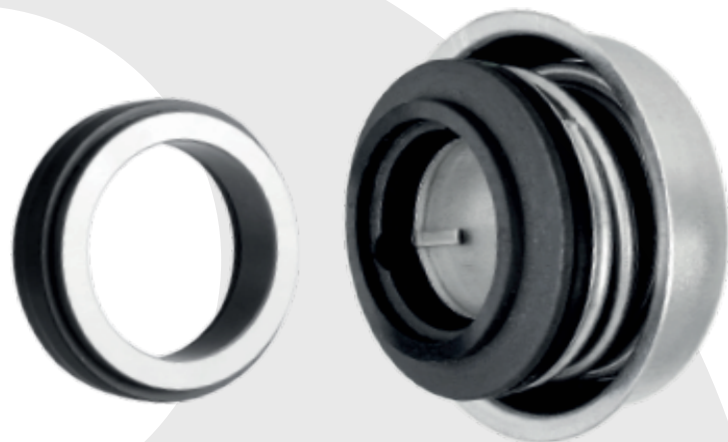
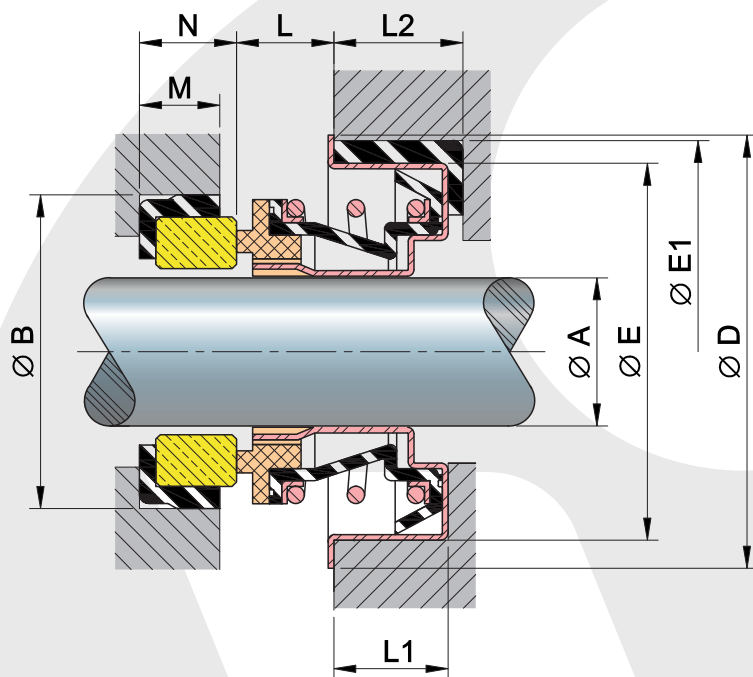


LINE

C Domestic






VAZEL



Dimensions (Inches)

A	B	D	E	E ₁	L	L ₁	L ₂	M	N
±0.002	±0.002	REF.	±0.002	±0.002	±0.015	±0.005	±0.005	±0.005	±0.015
1/2	1	1.32	1.13	-	0.188	0.345	-	0.25	0.31
5/8	1.187	1.625	1.44	-	0.265	0.345	-	0.282	0.34
5/8	1.25	1.625	1.44	-	0.265	0.345	-	0.344	0.41
3/4	1.375	1.719	1.575	-	0.235	0.345	-	0.344	0.41
3/4	1.375	1.719	1.575	1.771	0.235	0.345	0.452	0.167	0.2
1	1.625	2.008	1.85	-	0.312	0.393	-	0.375	0.44
1-1/8	1.889	2.244	2.047	-	0.314	0.432	-	0.252	0.31

Materials

- | | | |
|---|----------------|--|
|  | Metallic Parts | ➤ Stainless Steel 304, Brass. |
|  | Spring | ➤ Stainless Steel 304. |
|  | Rotary Face | ➤ Phenolic Carbon, Graphite Carbide, Sintered Silicon Carbide. |
|  | Bellow | ➤ NBR (Nitrile®), FKM (Vitón®), E.P.R (EPDM) |
|  | Seat | ➤ Ceramic, Sintered Silicon Carbide. |

Operation limits	
Velocity	Max. 5,000 R.P.M*
Pressure	100 PSI (2.81Kg/cm²)**
Temperature limits	-57 °C a 204 °C***

*Depends on the diameter of the shaft.

**It depends on the combination of material of the faces.

***Depends on the material of the elastomer.

Applications:

Mechanical seal VAZEL line "C", It is used in pumps for water, pools, water pumps and other applications, especially useful for applications where the speed is variable.