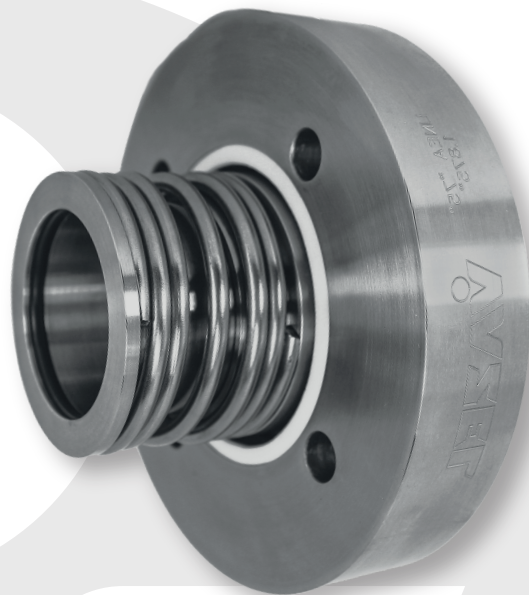
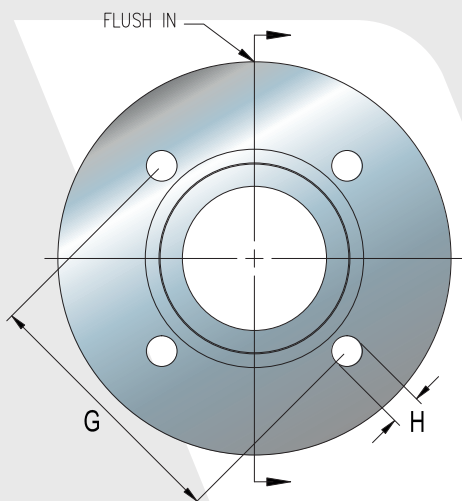
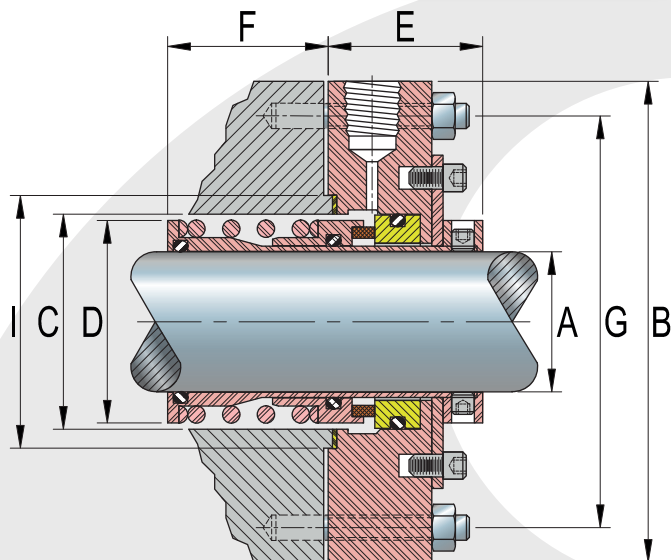


# LINE

# 75

# VAZEL



## Materials

-  Metallic Parts > Stainless Steel 316
-  Spring > Stainless Steel 316
-  Rotary Face > Graphite Carbide, Tungsten Carbide, Silicon Carbide
-  Bellow > NBR (Nitrile), FKM (Viton®), E.P.R (EPDM), Kalrez /Perlast (FFKM), Aflas (TFE/P), and Silicon (VMQ)
-  Seat > Silicon Carbide, Ceramic, Tungsten Carbide, Stainless Steel, Ni-Resist

## Dimensions (Inches) "SMALL BORE" (CBS)

MEDIDA	A	B	C	D	E	F	G	H	I
No.	±0.002	±0.031	M IN.	M AX.	±0.015	±0.015	±0.005	±0.015	±0.005
22	1.375	4.000	2.125	2.000	1.750	1.500	3.250	0.437	2.625
30	1.875	5.625	2.625	2.500	1.750	1.750	3.750	0.437	3.125
42	2.625	7.375	3.625	3.500	1.750	2.125	5.500	0.562	4.250

## Dimensions (Inches) "BIG BORE" (OVS)

MEDIDA	A	B	C	D	E	F	G	H	I
No.	±0.002	±0.031	M IN.	M AX.	±0.015	±0.015	±0.005	±0.015	±0.005
22	1.375	4.750	2.875	2.000	1.750	1.500	4.000	0.437	3.375
30	1.875	7.000	3.625	2.500	1.750	1.750	5.000	0.562	4.125
42	2.625	7.875	4.625	3.500	1.750	2.125	6.000	0.562	5.125

## Operation Limits

Velocity	Max. 3,600 R.P.M*
Pressure	150 PSI (10.6 Kg/cm²)**
Temperature limits	-57°C to 204°C***

\*Depends on the diameter of the shaft

\*\*It depends on the combination of material of the faces.

\*\*\*Depends on the material of the elastomer

## Applications:

The VAZEL line "75" mechanical seal is recommended in the use of rotary equipment, such as pumps, reactors, agitators, etc.; also for equipment that handles viscous or abrasive fluids used in the chemical, marine, water treatment industry; depending on the combination of materials.

This line is compatible with Durco pumps from group I, II and III CBS, OVS and other manufacturers.

For any variation regarding what is described in this technical specification, please send an email to [sales@vazel.com](mailto:sales@vazel.com)