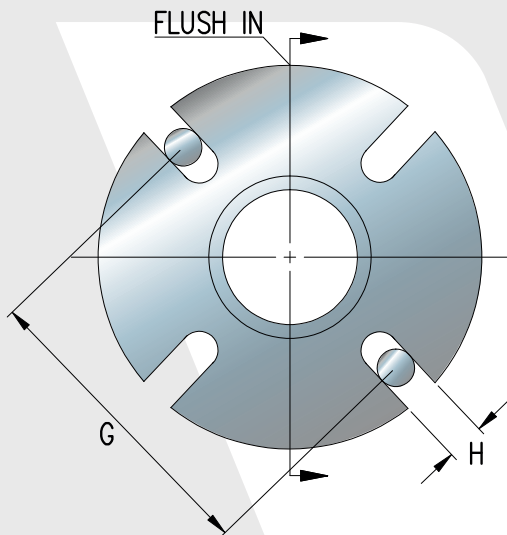
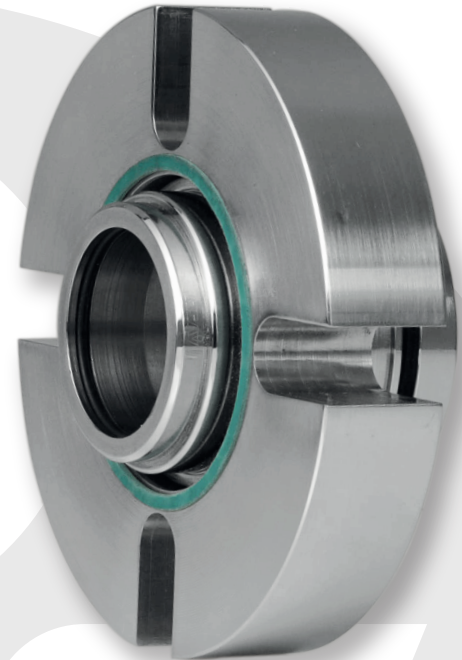
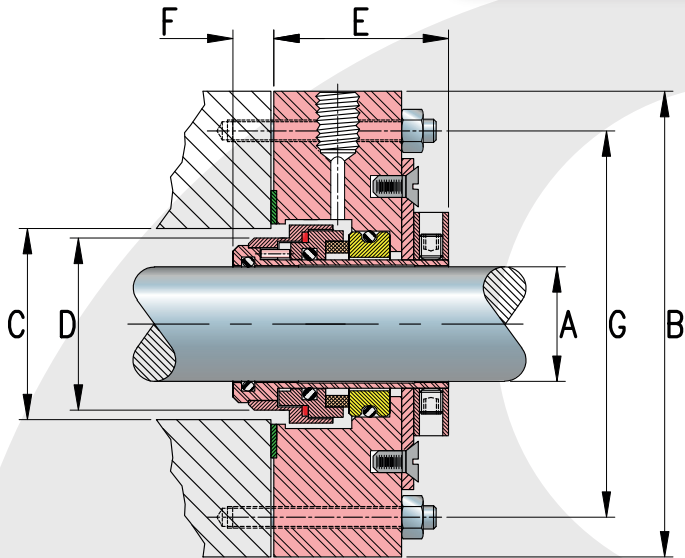


LINE

80



Materials

- Metallic Parts > Stainless Steel 316
- Spring > Stainless Steel 316
- Rotary Face > Graphite Carbide, Tungsten Carbide, Silicon Carbide
- Bellow > NBR (Nitrile) , FKM (Viton®), E.P.R (EPDM), Kalrez /Perlast (FFKM), Aflas (TFE/P), Creavey (PTFE/FKM) y Silicon (VMQ)
- Seat > Silicon Carbide, Ceramic, Tungsten Carbide, Stainless Steel, Ni-Resist

Dimensions (Inches)

SIZE	A	B	C	D	E	F	G	G	H
No.	±0.002	±0.015	MIN.	MAX.	±0.015	±0.015	MIN.	MAX.	±0.015
16	1.000	4.000	1.625	1.531	1.812	0.437	2.875	3.625	0.437
18	1.125	4.250	1.750	1.656	1.812	0.437	3.000	3.875	0.437
20	1.250	4.250	1.875	1.781	1.812	0.437	3.125	3.875	0.437
22	1.375	4.375	2.000	1.907	1.875	0.437	3.250	4.000	0.437
24	1.500	4.500	2.125	2.031	1.875	0.437	3.375	4.125	0.437
26	1.625	5.250	2.375	2.250	2.000	0.500	3.750	4.750	0.562
28	1.750	5.500	2.500	2.375	2.000	0.500	3.875	5.000	0.562
30	1.875	5.500	2.625	2.500	2.000	0.500	4.000	5.000	0.562
32	2.000	6.000	2.750	2.625	2.000	0.500	4.250	5.500	0.562

Operation Limits

Velocity	Hasta 3,600 R.P.M*
Pressure	125 PSI (8.8 Kg/cm ²)**
Temperature limits	-57°C a 204°C***

*Depends on the diameter of the shaft

**It depends on the combination of material of the faces.

***Depends on the material of the elastomer

Applications:

The VAZEL line "80" mechanical seal is recommended in the use of rotary equipment, such as pumps, reactors, agitators, etc.; also for equipment that handles viscous or abrasive fluids used in the chemical, petro chemistry, water treatment industry, etc.

For any variation regarding what is described in this technical specification, please send an email to sales@vazel.com