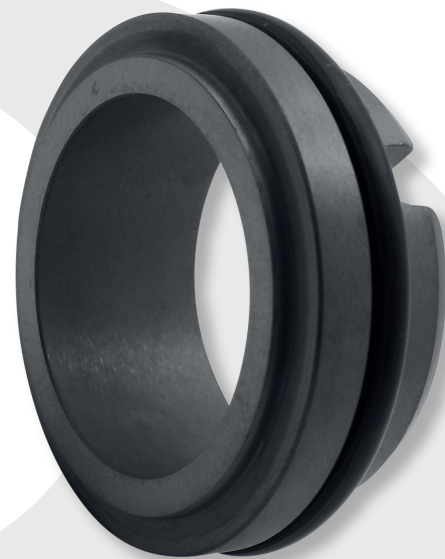
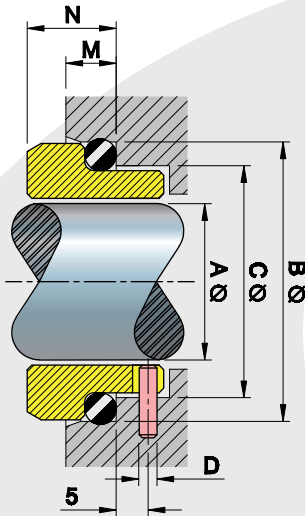


Seat

TYPE G9



VAZEL



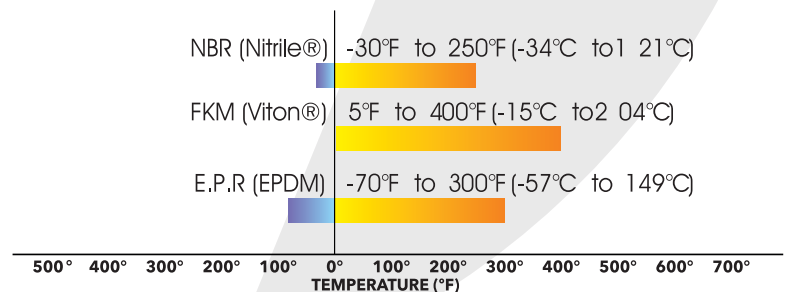
Dimensions (mm)

A	B	C	D	M	N
±0.05	±0.05	±0.05	±0.05	±0.05	±0.12
10	21	17	3.0	5.5	10.0
12	23	19	3.0	5.5	10.0
14	25	21	3.0	5.5	10.0
16	27	23	3.0	5.5	10.0
18	33	27	3.0	7.0	11.5
20	35	29	3.0	7.0	11.5
22	37	31	3.0	7.0	11.5
24	39	33	3.0	7.0	11.5
25	40	34	3.0	7.0	11.5
28	43	37	3.0	7.0	11.5
30	45	39	3.0	7.0	11.5
32	48	42	3.0	7.0	11.5
33	48	42	3.0	7.0	11.5
35	50	44	3.0	7.0	11.5
38	56	49	4.0	8.0	14.0
40	58	51	4.0	8.0	14.0
43	61	54	4.0	8.0	14.0
45	63	56	4.0	8.0	14.0
48	66	59	4.0	8.0	14.0
50	70	62	4.0	8.5	15.0
53	73	65	4.0	8.5	15.0
55	75	67	4.0	8.5	15.0
58	78	70	4.0	8.5	15.0
60	80	72	4.0	8.5	15.0
65	85	77	4.0	8.5	15.0
68	90	81	4.0	9.5	18.0
70	92	83	4.0	9.5	18.0
75	97	88	4.0	9.5	18.0
80	105	95	4.0	10.0	18.2

Materials

-  Bellows > NBR (Nitrile®), FKM (Viton®), E.P.R (EPDM).
-  Seat > Stainless Steel 304, Graphite Carbide, Sintered Silicon Carbide.

TEMPERATURE LIMITS



For any variation regarding what is described in this technical specification, please send an email to sales@vazel.com