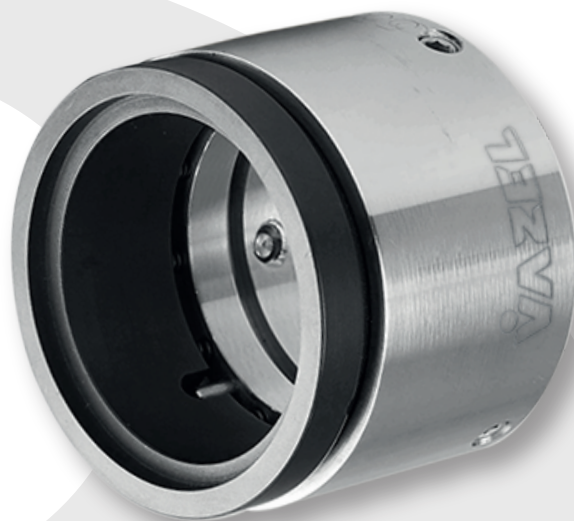
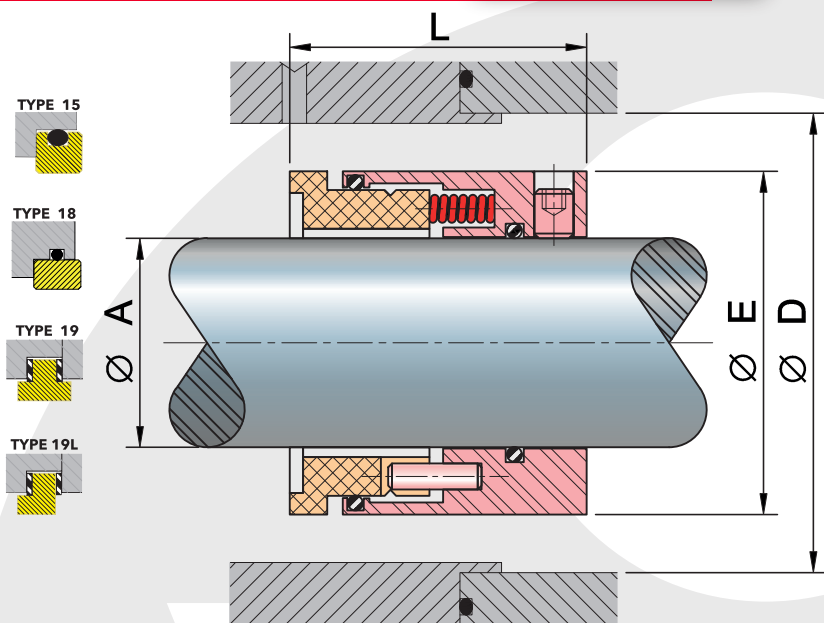


LINE

55



Dimensions (Inches)

SIZE	A	D	E	L
No.	±0.002	MIN.	±0.015	±0.015
16	1.000	1.687	1.562	1.750
18	1.125	1.812	1.687	1.750
20	1.250	1.937	1.812	1.750
22	1.375	2.062	1.937	1.750
24	1.500	2.187	2.062	1.750
26	1.625	2.375	2.250	1.750
28	1.750	2.500	2.375	1.750
30	1.875	2.625	2.500	1.750
32	2.000	2.750	2.625	1.750
34	2.125	2.875	2.750	1.750
36	2.250	3.000	2.875	1.750
38	2.375	3.125	3.000	1.750
40	2.500	3.250	3.125	1.750
42	2.625	3.375	3.250	1.750
44	2.750	3.500	3.375	1.750
46	2.875	3.625	3.500	1.750
48	3.000	3.937	3.812	1.750
50	3.125	4.062	3.937	1.750
52	3.250	4.187	4.062	1.750
54	3.375	4.312	4.187	1.750
56	3.500	4.437	4.312	1.750
58	3.625	4.562	4.437	1.750
60	3.750	4.687	4.562	1.750
62	3.875	4.812	4.687	1.750
64	4.000	4.937	4.812	1.750

Materials

- Metallic Parts > Stainless Steel 316.
- Spring > Hastelloy "C"
- Rotary Face > Graphite Carbide, PTFE
- Bellow > NBR (Nitrile®), FKM (Viton®), CR (Neoprene®), E.P.R (EPDM) Kalrez (FFKM), Aflas (TFE/P), Creavey (PTFE/FKM) y Silicón (VMQ)
- Seat > Ceramic, Silicon Carbide, Tungsten Carbide, Stainless Steel

Operation limits

Velocity	Max. 3,600 R.P.M*
Pressure	450 PSI (32.0Kg/cm²)**
Temperature limits	-59 °C to 316 °C***

*Depends on the diameter of the shaft.

**It depends on the combination of material of the faces.

***Depends on the material of the elastomer.

Applications:

The VAZEL line "55" mechanical seal is used in industrial equipments such as pumps, reactors, agitators, etc.; and for those equipments that handle fluids used in the chemical industry, petrochemical industry, paper industry and water treatment.

For any variation regarding what is described in this technical specification, please send an email to sales@vazel.com