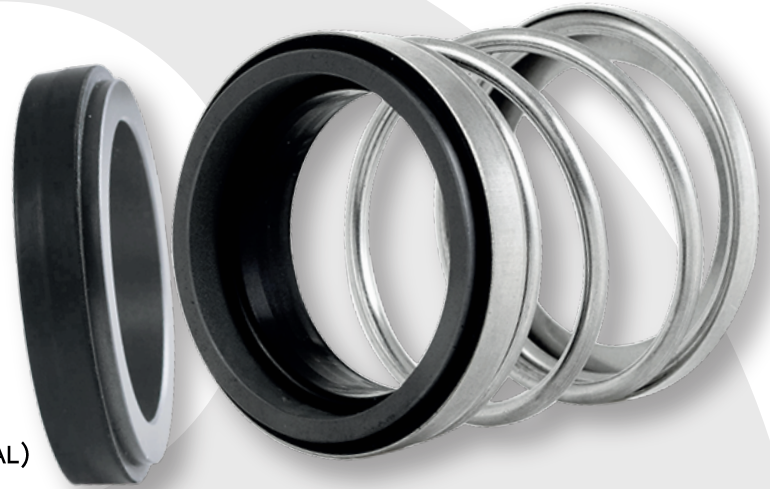
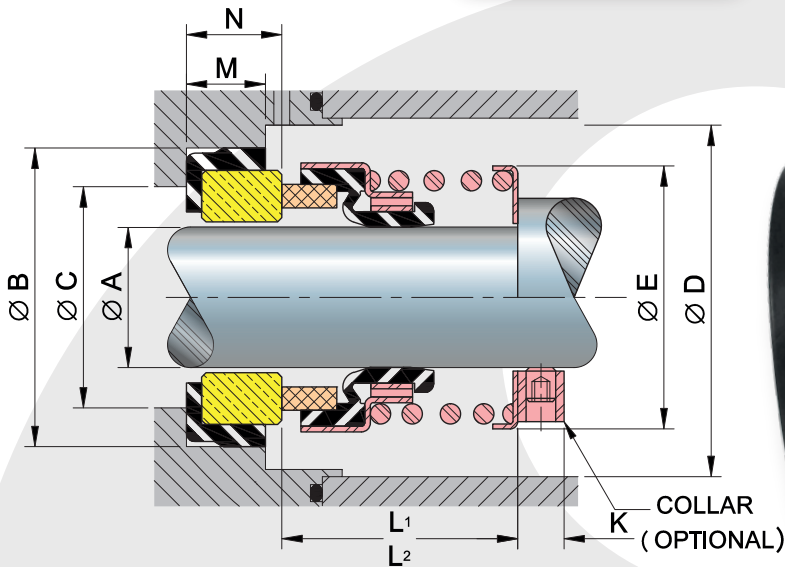


LINE

A4

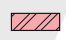






Dimensions (Inches)

A	B	C	D	E	L ₁	L ₂	K	M	N
±0.002	±0.002	REF.	MIN.	MAX.	±0.020	±0.020	±0.005	±0.005	±0.015
5/8	1.250	0.937	1.343	1.218	1.312	0.875	0.312	0.344	0.406
3/4	1.375	1.062	1.468	1.343	1.312	0.875	0.375	0.344	0.406
7/8	1.500	1.187	1.656	1.531	1.375	0.937	0.375	0.344	0.406
1	1.625	1.312	1.750	1.625	1.562	1.000	0.375	0.375	0.438
1-1/8	1.750	1.437	1.870	1.745	1.625	1.062	0.375	0.375	0.438
1-1/4	1.875	1.562	2.000	1.875	1.625	1.062	0.375	0.375	0.438
1-3/8	2.000	1.687	2.125	2.000	1.687	1.125	0.375	0.375	0.438
1-1/2	2.125	1.812	2.250	2.125	1.687	1.125	0.375	0.375	0.438
1-5/8	2.375	2.000	2.500	2.375	2.000	1.375	0.375	0.438	0.500
1-3/4	2.500	2.125	2.625	2.500	2.000	1.375	0.375	0.438	0.500
1-7/8	2.625	2.250	2.750	2.625	2.125	1.500	0.375	0.438	0.500
2	2.750	2.375	2.937	2.812	2.125	1.500	0.375	0.438	0.500
2-1/8	3.000	2.500	3.125	3.000	2.375	1.687	0.500	0.500	0.562
2-1/4	3.125	2.625	3.250	3.125	2.375	1.687	0.500	0.500	0.562
2-3/8	3.250	2.750	3.375	3.250	2.500	1.812	0.500	0.500	0.562
2-1/2	3.375	2.875	3.500	3.375	2.500	1.812	0.500	0.500	0.562
2-5/8	3.375	3.000	3.750	3.625	2.750	1.937	0.500	0.562	0.625
2-3/4	3.500	3.125	3.875	3.750	2.750	1.937	0.500	0.562	0.625
2-7/8	3.750	3.250	4.000	3.875	2.875	2.062	0.500	0.562	0.625
3	3.875	3.375	4.187	4.062	2.875	2.062	0.500	0.562	0.625

Dimensions inside Norma ASTM (except "C" column).
The "c" column depends on the manufacturer of the pump.

Materials

-  Metallic Parts > Stainless Steel 316, 304.
-  Spring > Stainless Steel 316, 304.
-  Rotary Face > Tungsten Carbide, Sintered Silicon Carbide.
-  Bellow > FKM (Viton®), E.P.R (EPDM).
-  Seat > Sintered Silicon Carbide, Tungsten Carbide.

Operation limits

Velocity	Max. 3,600 R.P.M*
Pressure	150 PSI (10.5Kg/cm ²)**
Temperature limits	-57 °C to 204 °C***

*Depends on the diameter of the shaft.

**It depends on the combination of material of the faces.

***Depends on the material of the elastomer.

Applications:

VAZEL Line "A4" mechanical seal is used in industrial pumps, rotating turbines, centrifuges or agitators. It works with hydraulic fluids and aqueous solutions, depending on the combination of materials.