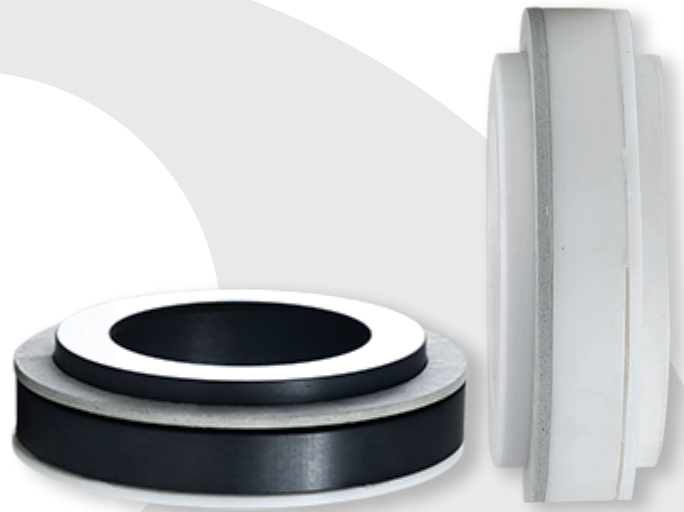
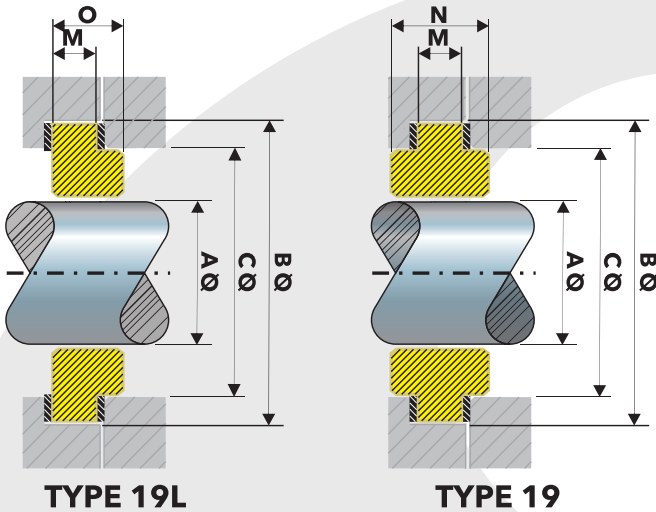


# Seat

## TYPE 19



### Dimensions (Inches)

SIZE	A	B	C	M	N	O
No.	±0.002	±0.002	REF.	±0.005	±0.015	±0.015
16	1.000	2.121	1.625	0.375	0.875	0.625
18	1.125	2.251	1.750	0.375	0.875	0.625
20	1.250	2.371	1.875	0.375	0.875	0.625
22	1.375	2.441	2.000	0.375	0.875	0.625
24	1.500	2.751	2.250	0.375	0.875	0.625
26	1.625	2.871	2.375	0.375	0.875	0.625
28	1.750	3.121	2.500	0.375	0.875	0.625
30	1.875	3.251	2.625	0.375	0.875	0.625
32	2.000	3.501	2.750	0.375	0.875	0.625
34	2.125	3.751	2.875	0.375	0.875	0.625
36	2.250	3.871	3.000	0.375	0.875	0.625
38	2.375	3.911	3.062	0.375	0.875	0.625
40	2.500	4.121	3.250	0.375	0.875	0.625
42	2.625	4.253	3.375	0.375	0.875	0.625
44	2.750	4.411	3.625	0.750	1.250	1.000
46	2.875	4.531	3.750	0.750	1.250	1.000
48	3.000	4.591	3.875	0.750	1.250	1.000
50	3.125	4.721	4.000	0.750	1.250	1.000
52	3.250	4.911	4.125	0.750	1.250	1.000
54	3.375	5.031	4.250	0.750	1.250	1.000
56	3.500	5.161	4.375	0.750	1.250	1.000
58	3.625	5.281	4.500	0.750	1.250	1.000
60	3.750	5.411	4.625	0.750	1.250	1.000
62	3.875	5.531	4.750	0.750	1.250	1.000
64	4.000	5.661	4.875	0.750	1.250	1.000

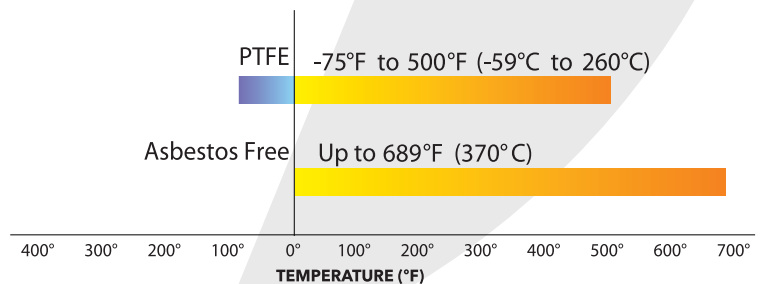
### Dimensions (Inches) Sentinel

SIZE	A	B	C	M	N
No.	±0.002	±0.002	REF.	±0.005	±0.015
12	0.750	1.562	1.250	0.812	0.375
16	1.000	1.812	1.562	0.812	0.375

### Materials

- Bellow > Teflon temperature range of -301°F to 450°F (-185°C to 232°C). Asbestos Free up to 689°F (370°C). (Not used in cryogenic applications).
- Seat > Ceramic, Silicon Carbide, Tungsten carbide, Ni-Resist, 316 Stainless Steel.

### TEMPERATURE LIMITS



For any variation regarding what is described in this technical specification, please send an email to [sales@vazel.com](mailto:sales@vazel.com)